



# InnoEnergy PowerHUB CZ Prague 5

**A sustainable energy future for Europe**

Prague 5, 30.05.2017 / Petr Bažant

2. Business Creation Services

3. Innovation Projects

4. Education

5. PowerAlliance & Acceleration Primer

6. Tools

## Who we are

Europe's engine for innovation  
in sustainable energy

Empowering every stage  
of the innovation process

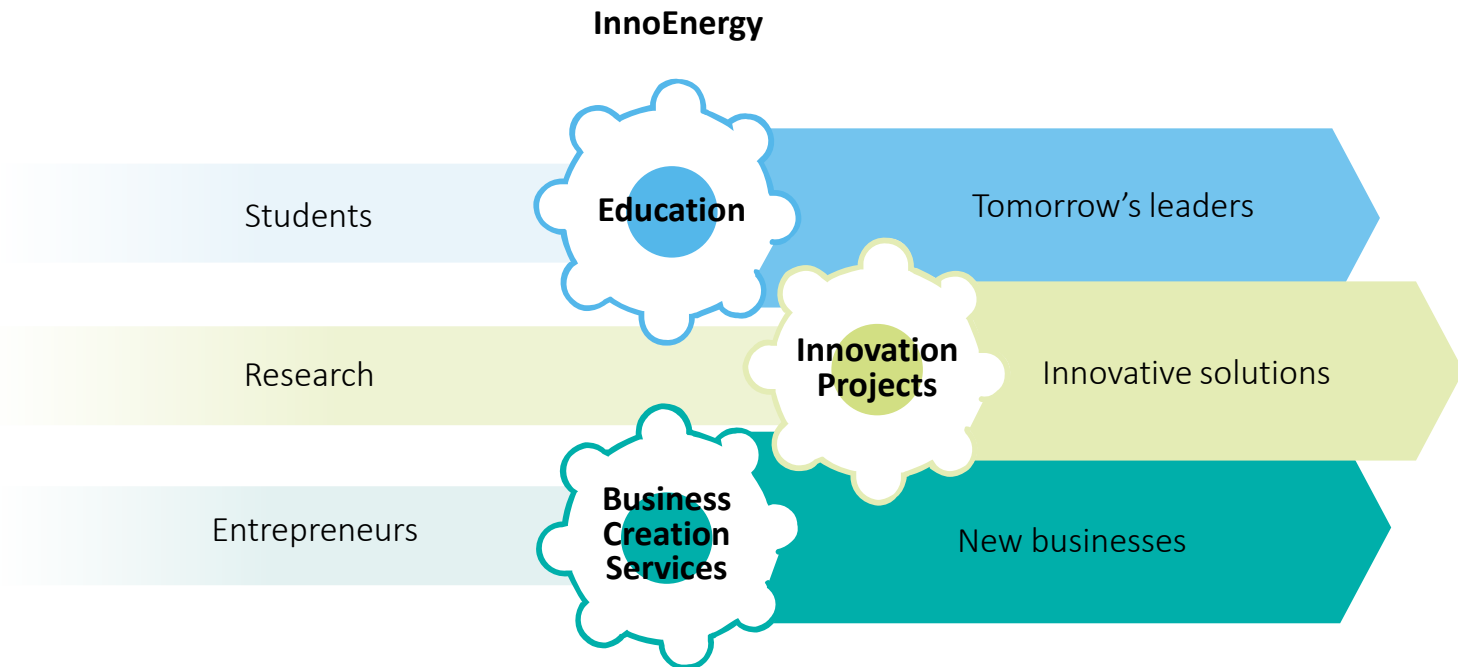
Investing in people,  
technologies, businesses

Established 2010:  
supported by the EIT

Public-private partnership  
aiming for financial  
sustainability



# The Innovation Engine for Europe



## Our goal: sustainable energy

- **Ensure security and safety of supply**
- **Reduce costs in the energy value chain**
- **Reduce CO2 emissions**
- **Improve European competitiveness**
- **Remove barriers to innovation**
- **Encourage sustainable growth**
- **Create jobs**



## Thematic fields and technology focus



Clean coal and  
gas technologies



Energy storage



Energy efficiency



Energy from  
chemical fuels



Renewable  
energies



Smart and efficient  
buildings and cities



Smart  
electric grid



Nuclear  
instrumentation

## Making connections: the power of the network

6 co-location centres

26 shareholders

299 additional  
partners

Activities in 17  
countries



all figures correct as of March 2017

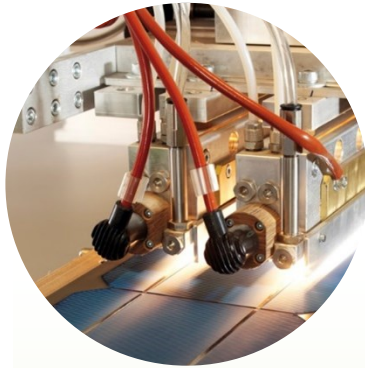


hubs

Note:  
Both office and Hubs should  
selected by default



## For every stage of the innovation journey



Innovation  
Projects



Business  
Creation  
Services



Education

# Entrepreneurial success

Dracula Technologies

***See the light with  
printed PV cells***



France

Renewable energy

OpenDomo

***Measuring energy  
consumption with  
Artificial Intelligence***



Iberia

Smart and efficient  
buildings and cities

GRADIS

***A new era  
of smart lighting***



Poland

Smart electric grid

171

Early start-ups  
supported

95

Companies created

55

Million euros  
of external  
investment raised

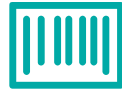
2 144

Business ideas  
captured

# Connecting entrepreneurs and start-ups to markets and customers



## Tailored business support: the InnoEnergy Highway



Product: potential, development, pilot, launch



Market: opportunities, positioning, modelling, planning



People: capabilities, training, support, mentoring



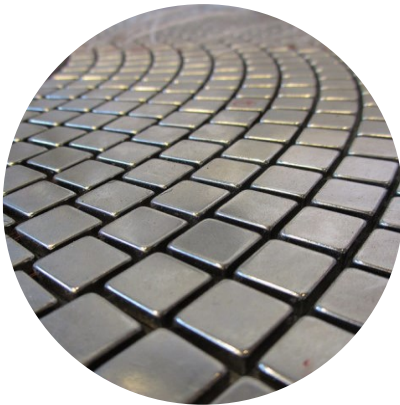
Finance: seed money, VCs, angels, equity

**Viable technologies, sustainable businesses,  
entrepreneurial spirit**

## Innovation success

HYMES

*Hydroelectric  
mechanical  
energy storage*



Energy storage

MrCySeMoL

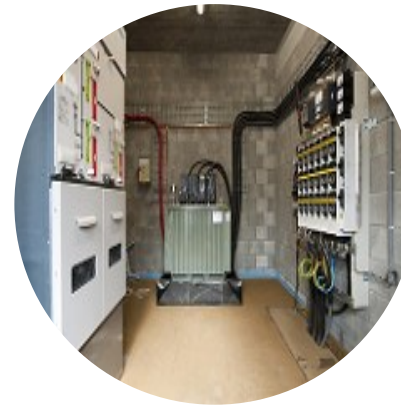
*Cyber security  
tool*



Smart Electric Grid

Active Substations

*Proactive  
monitoring*



Smart and efficient  
buildings and cities

160

Project partners across  
Europe

77

Patents filed

78

Products and  
services supported

3

Manufacturing facilities  
constructed

147

Million euros of  
EIT InnoEnergy investment

1.2

Billion euros in project costs

3

Billion euros in  
forecasted sales

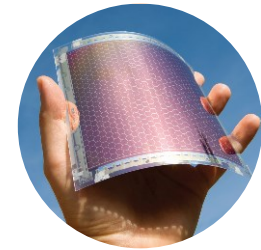
## About Innovation Projects



Investing in commercially  
focused R&D



Finding partners for  
product development



Turning prototypes into  
viable products



Shortening time  
to market



Reducing financial risks of  
product development



Supporting on-going  
industrialisation

Working with InnEnergy

Combining the best of private and public models

**0.5-50**

Million €  
Project  
budget range

**0.2-5**

Million €  
Typical value of  
participation

**2.6**

Million €  
Average  
project  
budget

**61%**

Average  
ratio of  
funding

**1X**

ROI  
Expected  
within  
5 years  
of project  
completion

**5X**

ROI  
Expected  
overall

## What is IE Mas

- 12 technical universiti
- The biggest Energy se  
companies.
- Innovation and  
entrepreneurship tra
- Summer schools or ir
- Double degree
- Chance for scholarsh





## Our alumni

***“We need to invest more in green power”***



**Gregory Kotsis,**  
MSc SENSE  
Project engineer at IREC  
Barcelona

***“Long-term vision is the key to the future”***



**Roberta Cirillo,**  
MSc EMINE  
Research engineer, CEA  
Grenoble

***“Versatility, entrepreneurship and international experience”***



**Joeri Siborgs,**  
MSc Energy for Smart Cities  
R&D project engineer,  
Elia Brussels

352

Graduates from the  
EIT InnoEnergy  
Master's School

9500

Applicants to  
EIT InnoEnergy  
Master's School

93%

Graduates who find a  
job within six months  
of graduating

15%

Average annual  
salary earnings  
over graduates of  
similar programmes





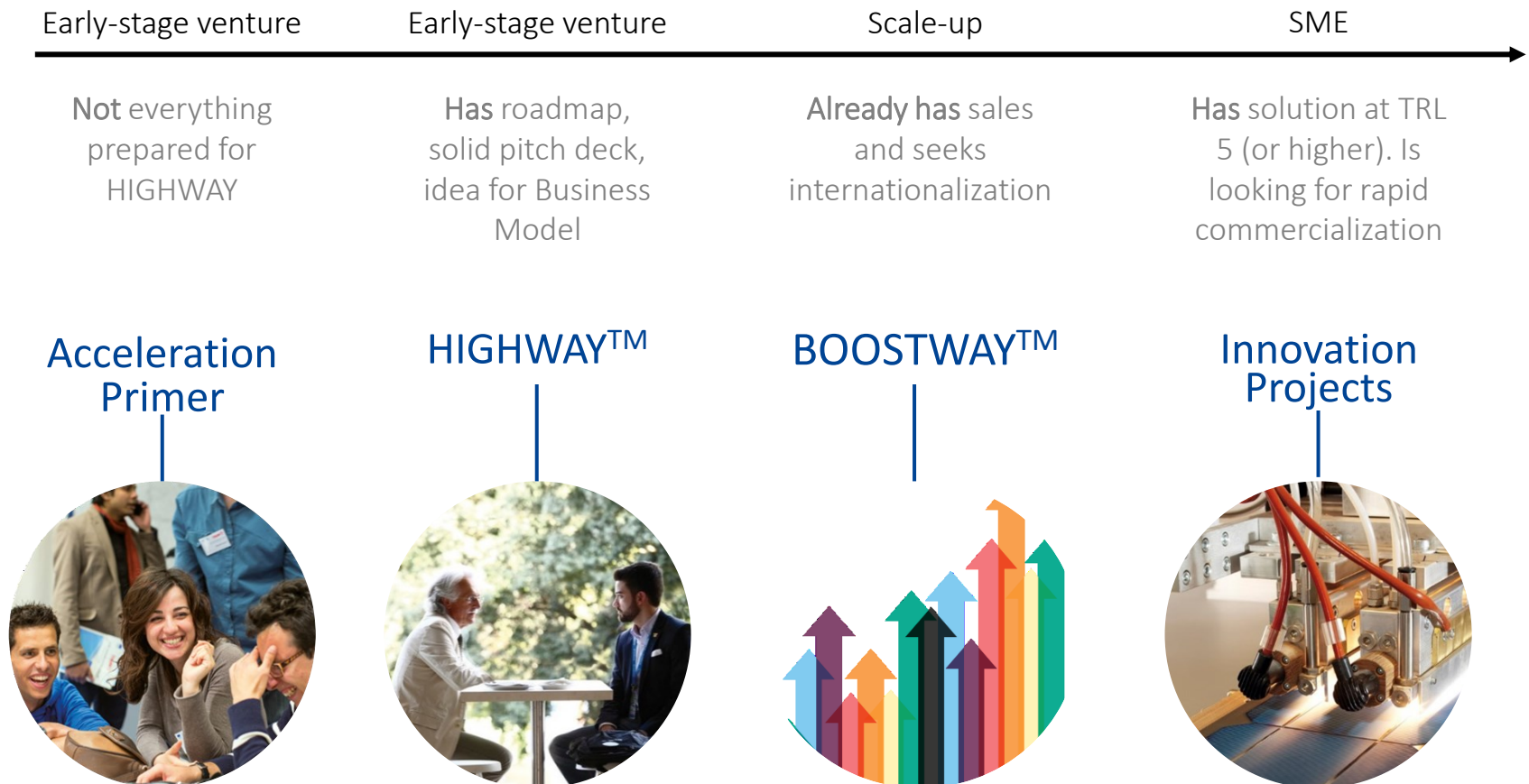
***Power***Alliance  
*by InnoEnergy*

## ***Power***Alliance

Toolbox for connecting ecosystems

**Power lies in the network** – general assumption is that the ***Power***Alliance platform will unlock smooth diffusion of know-how, innovators and investors between dispersed European innovation ecosystems.

## For every stage of the innovation journey



## InnoEnergy's Acceleration Primer



**PowerAlliance**  
*by InnoEnergy*

Pre-acceleration/incubation service provided by HUBs, utilizing their know-how and experience, supported by InnoEnergy's tools and methodology.



### InnoEnergy's tools:

1. Workbook 2.0
2. Library
3. MOOCs
4. Dedicated materials
5. Primer example



### Deliverables after completing Acceleration Primer:

1. Roadmap (BCS Template) \*
2. Pitch Deck \*
3. Go-to-market strategy \*
4. Competitive Landscape
5. Business Model Canvas
6. Proof of interest/LOI

Working prototype is a must-have.



# **Power**Alliance

*by InnoEnergy*



**PowerGuide**  
*by InnoEnergy*

Workbook v 2.0  
(ex-KICStart your  
business)

*(Guiding  
Entrepreneurs to  
Power)*



**PowerBank**  
*by InnoEnergy*

InnoEnergy's  
Digital Library

*(where we store  
more power and  
charge people  
when needed)*



**PowerDays**  
*by InnoEnergy*

Monthly Meeting  
of the Ecosystem

*(where people  
share power)*



**PowerUp!**  
*by InnoEnergy*

The Annual  
Competition

*(where you can  
power up your  
business to a new  
level)*

*and more..*

## PowerHUB CZ – InnoEnergy HUB Czech

### Combining Global Approach and Local Knowledge

- ✓ Innovation projects & PowerHUB for CZ & SK (+V4 & CEE)
- ✓ Deep knowledge of the CEE Market
- ✓ **CROSS OVER FOCUS – Energy / Communications / Mobility**
- ✓ Based at Prague 5 (and cooperation with CITY)
- ✓ ABC PowerHUB US Landing Program

**Expanding the circle of innovation for energy and cross over projects in Czech and Slovak**

## PowerHUB CZ Other Activities

### ☐ Innovation Centre Services

(Legal, Finance, Accounting, Project Management, Production, Mentoring, Coaching, US Landing)

### ☐ Scouting Projects and Investment tools

Venture Capital, Investment Funds Management

### ☐ E-Accelerator Energy Community

2-weekly energy breakfasts – brunches; students-professionals mixture

### ☐ *Partner's PowerHUB PreSeed Fund*

Pre Acceleration Fund; 5 – 10 Mil. CZK/ Year

### ☐ Technical Education + Elementary and High School Cooperation

## Partnership with PowerHUB

- ❑ **InnoEnergy PowerUP !** – opening June 2017
  - any project suitable for **Primer**
  - closing Date **Septemeber 2017**
- ❑ Projects shall be evaluated by unique tool - **EIT InnoEnergy Highway** (process for evaluation of the projects) and with use of tools and events of EIT InnoEnergy CC Poland Plus Countries
- ❑ Efficient capacity for 10 new projects per year within CZ and Slovak market (primarily based in Prague, with option in other cities + **Prague 5 Project**)

## Partnership with PowerHUB

### ❑ **Re/Cobranding of Prague PowerHUB**

All activities of E-Accelerator in Czech and Slovak shall be co-branded with Partners Schemes (incl. CZ activities like E-Nergy Club, E-Nergy Fund etc.)

### ❑ In the case of interest **possibility to expand into other CEE countries:**

Bulgaria, Croatia, Greece, Hungary, Poland, Romania, Serbia, Slovenia, Montenegro, Baltics

### ❑ **Partnership Level (according to scope of activities)**

- Activities
- Financial Participation



# InnoEnergy Introduction

Petr Bažant  
petr@e-accelerator.cz



[www.innoenergy.com](http://www.innoenergy.com)



InnoEnergy is supported by the EIT,  
a body of the European Union